

AGGREGATED BATTERY ENERGY STORAGE SYSTEM (BESS) FACILITY

ISSUED FOR FINAL DESIGN REVIEW AND TECHNICAL EVALUATION
MARCH 30, 2022



Sheet List Table

Sheet Number	Sheet Title
E-000	COVER PAGE
E-100	ELECTRICAL SYMBOL LEGEND
E-200	ELECTRICAL DETAILS
E-300	FACILITY LAYOUT
E-400	EHOUSE LAYOUT
E-500	SINGLE LINE DIAGRAM
E-600	AUXILIARY SINGLE LINE DIAGRAM
E-700	ELECTRICAL SCHEDULES
R-501	SINGLE LINE DIAGRAM REV 1
R-502	SINGLE LINE DIAGRAM REV 2
R-601	AUXILIARY SINGLE LINE DIAGRAM REV 1

Notes:

1. THE INTELLECTUAL PROPERTY OF THIS DRAWING SET IS VESTED IN THE BATT BOYS AND IT MAY NOT BE REPRODUCED IN WHOLE OR PART OR USED FOR THE MANUFACTURE OF ANY ARTICLE WITHOUT THE EXPRESS PERMISSION OF THE COPYRIGHT HOLDERS.
2. WORK TO FIGURED DIMENSIONS ONLY.
3. THIS DRAWING IS TO BE READ IN CONJUNCTION WITH ALL RELEVANT ARCHITECTS, SERVICE ENGINEER'S AND THE BATT BOYS DRAWINGS AND SPECIFICATIONS.
4. CONTRACTOR SHALL CHECK ALL DIMENSIONS ON THE WORK AND REPORT ANY DISCREPANCY TO CONSULTANT BEFORE PROCEEDING.
5. THIS DRAWING IS NOT TO BE USED FOR CONSTRUCTION UNTIL AUTHORIZED IN WRITING BY CONSULTANT.

REV	DESCRIPTION	BY	DATE
4	ISSUED FOR FINAL TECH. REVIEW	NT	03/30/2022
3	ISSUED FOR WINTER TECH. REVIEW	NT	02/08/2022
2	ISSUED FOR REVIEW	NT	01/28/2022
1	ISSUED FOR REVIEW	NT	01/21/2022

STATUS: NOT ISSUED FOR CONS.

THE SPONSOR: ENFINITE
 509 Ave SW #1320
 CALGARY, ALBERTA
 T2P 3H9

THE TEAM: THE BATT BOYS
 UNIVERSITY OF CALGARY
 SCHULICH SCHOOL OF ENGINEERING
 CALGARY, ALBERTA

NATHAN THAM - 30046119
 JOSH VALIQUETTE - 30045123
 JUSTIN NGUYEN - 30042258
 LUKAS MORRISON - 30038720
 ADAM KUCHARSKI - 30039557

PROJECT TITLE: CAPSTONE
 AGGREGATED BATTERY
 ENERGY STORAGE
 SYSTEM (BESS) FACILITY

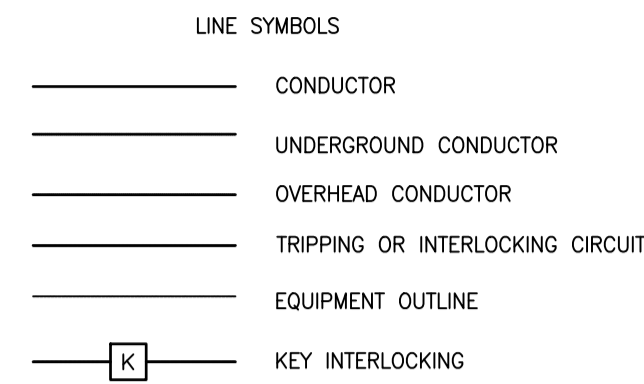
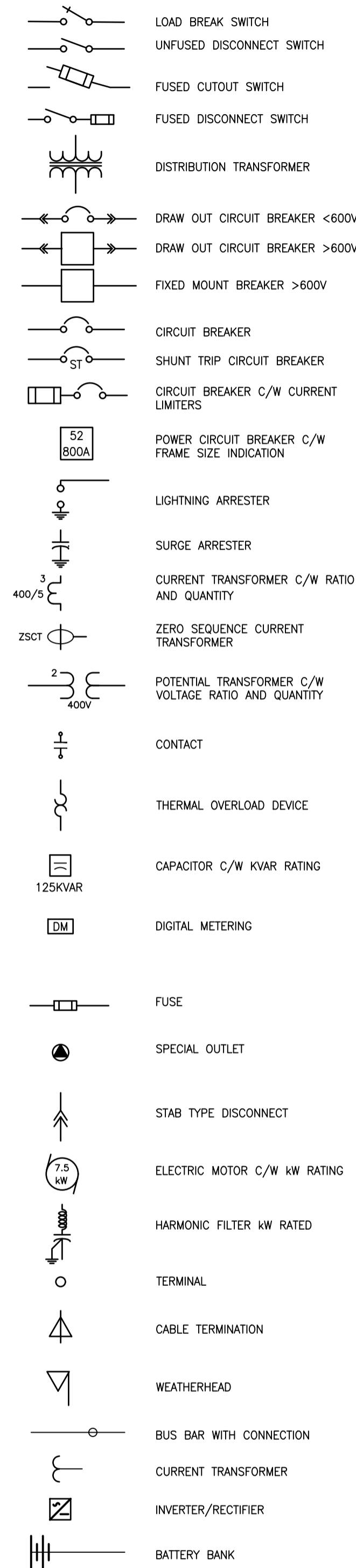
DRAWING TITLE:
 COVER PAGE

DRAWING SCALE:	DATE:	DRAWN:	CHECKED:
N.T.S.	3/26/22	NT	NT
PROJECT NO:	DRAWING NO:	REVISION:	
00001	E-000		4

ELECTRICAL LEGEND SINGLE LINE & SCHEMATIC SYMBOLS

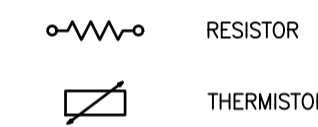
ELECTRICAL SYMBOL LEGEND

SINGLE LINE

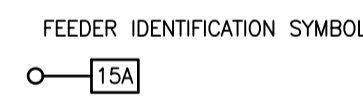
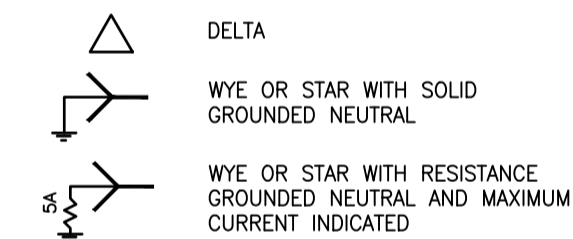


- SWITCH GEAR DEVICE NUMBER AND FUNCTIONS
- 15 SYNCHRONIZATION CHECK RELAY
 - 27 AC UNDER VOLTAGE
 - 32 DIRECTIONAL POWER RELAY
 - 40 LOSS OF FIELD PROTECTION RELAY
 - 46 PHASE BALANCE CURRENT RELAY
 - 47 PHASE SEQUENCE RELAY
 - 48 INCOMPLETE SEQUENCE RELAY
 - 49 AC THERMAL OVERLOAD RELAY
 - 50 AC INSTANTANEOUS OVERCURRENT RELAY
 - 51 AC TIME DELAY OVERCURRENT RELAY
 - 52 AC CIRCUIT BREAKER
 - 59 AC OVER VOLTAGE RELAY
 - 63 SUDDEN PRESSURE RELAY
 - 76 PHASE ANGLE MEASURING RELAY
 - 81 UNDER FREQUENCY RELAY
 - 86 LOCKOUT RELAY
 - 87 DIFFERENTIAL CURRENT RELAY
 - 92 REVERSE POWER RELAY

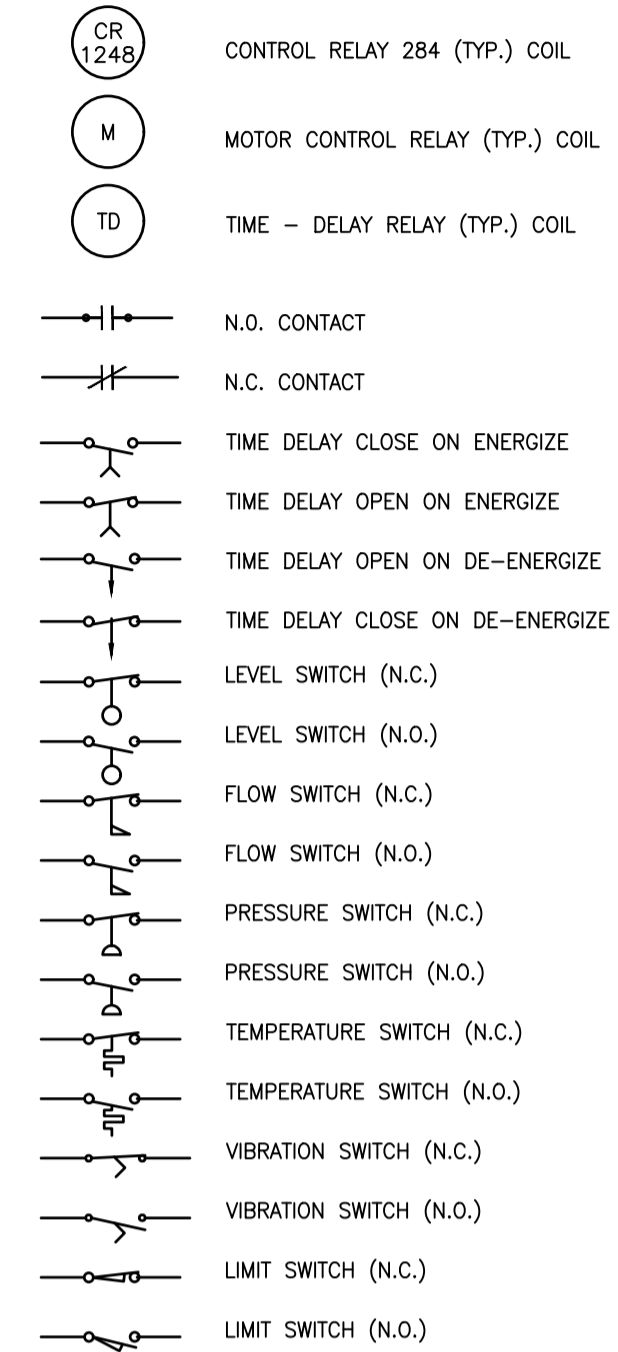
SPECIALIZED RELAY FUNCTION ARE INDICATED BY A LETTER SUFFIX: S - STALL, G - GROUND, T - TEMPERATURE.



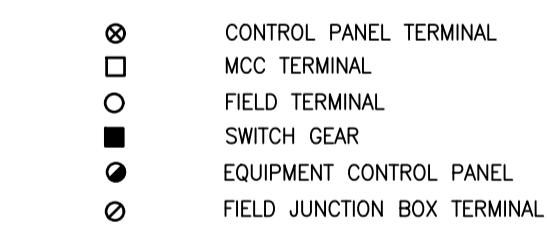
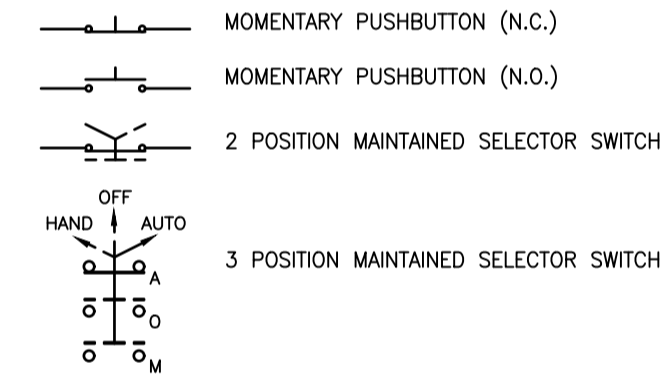
3 PHASE TRANSFORMER CONNECTION SYMBOLS



SCHEMATIC



SWITCH FUNCTION DESCRIPTOR, PLACED BELOW SWITCH SYMBOL
 FIRST LETTER: C (CLOSE) OR O (OPEN)
 SECOND LETTER: O (ON)
 THIRD LETTER: H (HIGH) OR L (LOW) OPTIONAL
 FOURTH LETTER: VARIABLE, e.g. L (LEVEL), P (PRESSURE), ETC.



Notes:

1. THE INTELLECTUAL PROPERTY OF THIS DRAWING SET IS VESTED IN THE BATT BOYS AND IT MAY NOT BE REPRODUCED IN WHOLE OR PART OR USED FOR THE MANUFACTURE OF ANY ARTICLE WITHOUT THE EXPRESS PERMISSION OF THE COPYRIGHT HOLDERS.

2. WORK TO FIGURED DIMENSIONS ONLY.

3. THIS DRAWING IS TO BE READ IN CONJUNCTION WITH ALL RELEVANT ARCHITECTS, SERVICE ENGINEER'S AND THE BATT BOYS DRAWINGS AND SPECIFICATIONS.

4. CONTRACTOR SHALL CHECK ALL DIMENSIONS ON THE WORK AND REPORT ANY DISCREPANCY TO CONSULTANT BEFORE PROCEEDING.

5. THIS DRAWING IS NOT TO BE USED FOR CONSTRUCTION UNTIL AUTHORIZED IN WRITING BY CONSULTANT.

4	ISSUED FOR FINAL TECH. REVIEW	NT	03/30/2022
3	ISSUED FOR WINTER TECH. REVIEW	NT	02/08/2022
2	ISSUED FOR REVIEW	NT	01/28/2022
1	ISSUED FOR REVIEW	NT	01/21/2022

REV:	DESCRIPTION:	BY:	DATE:
STATUS:	NOT ISSUED FOR CONS.		

THE SPONSOR: ENFINITE
 509 Ave SW #1320
 CALGARY, ALBERTA
 T2P 3H9

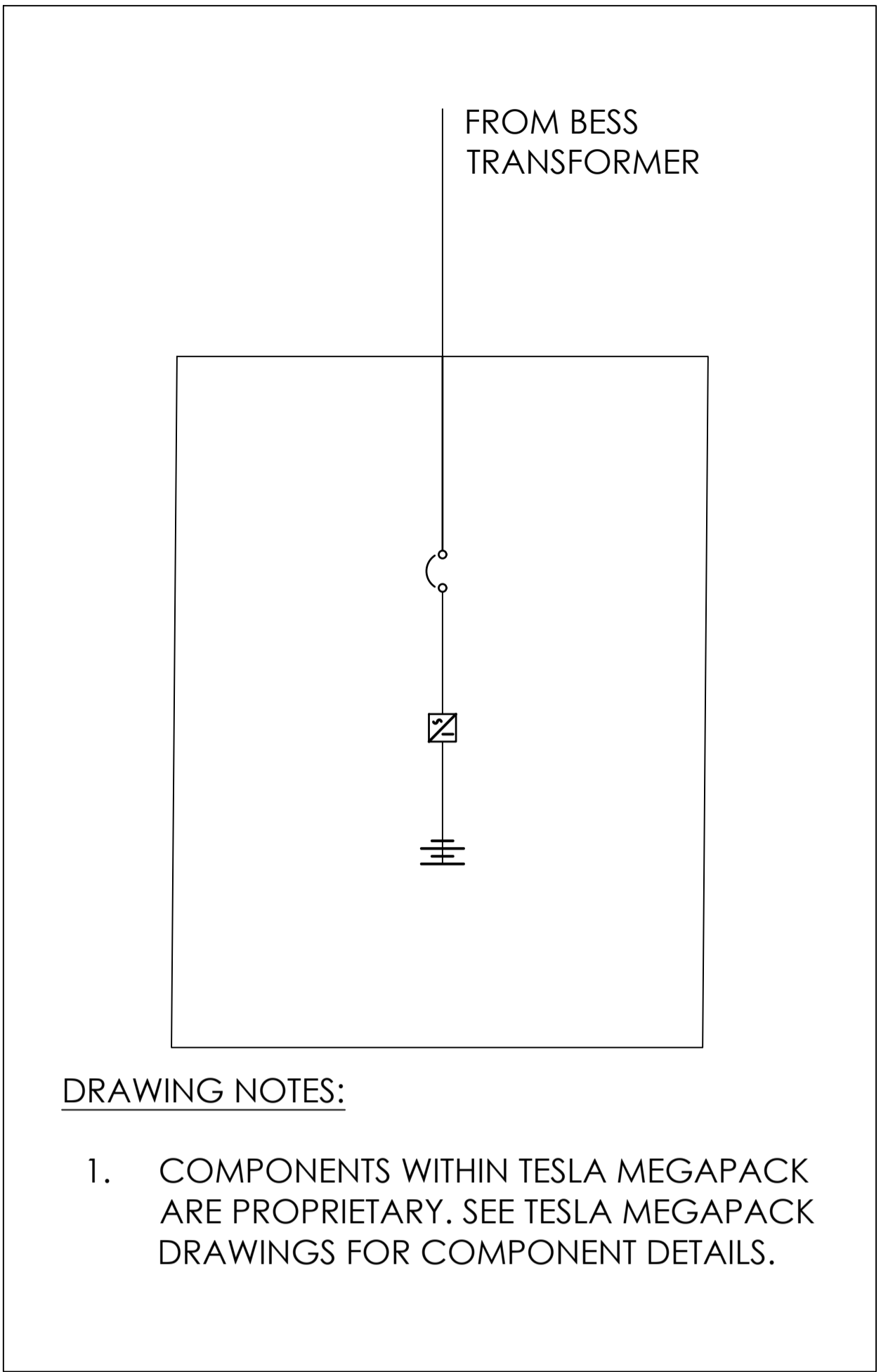
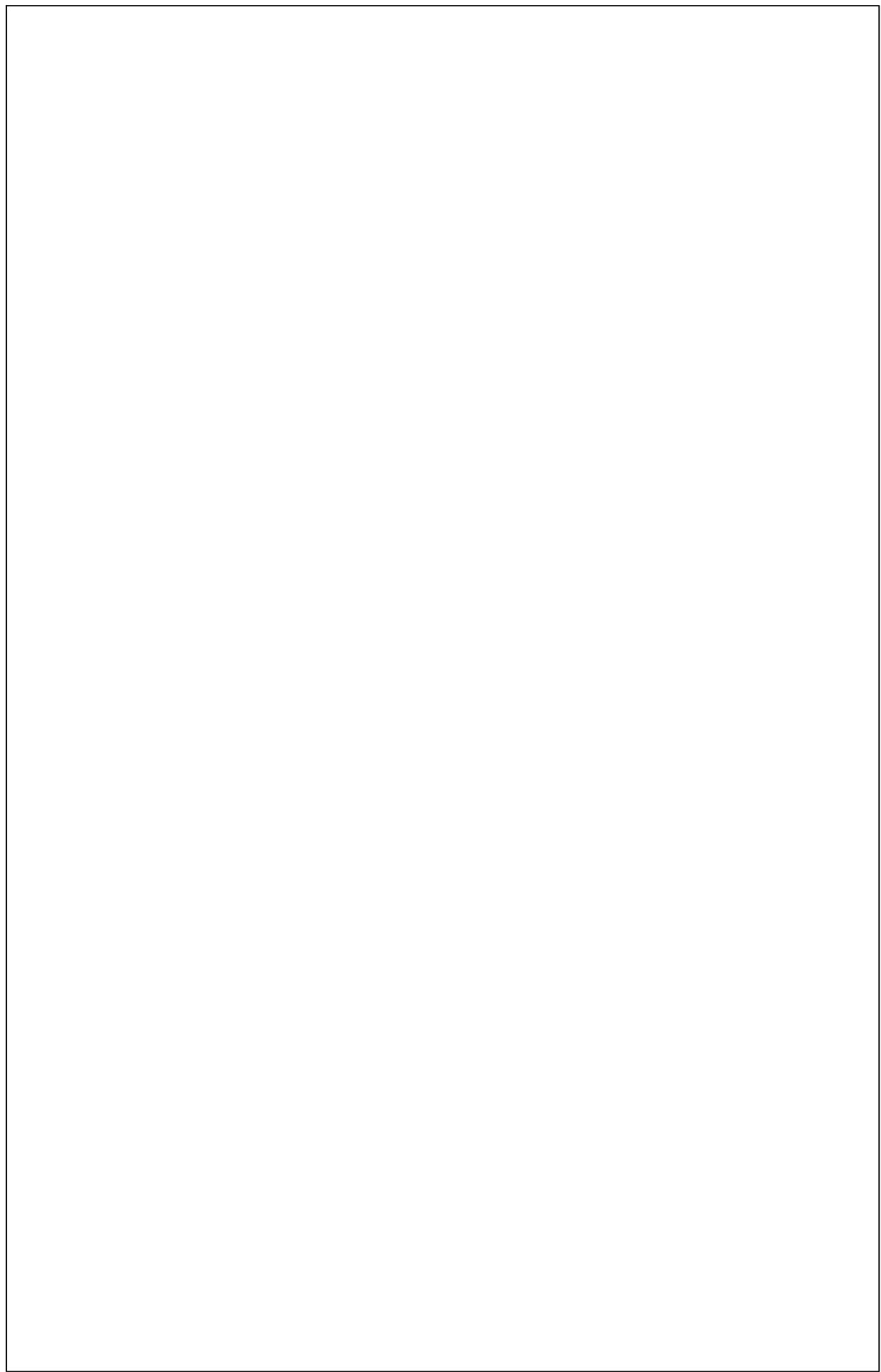
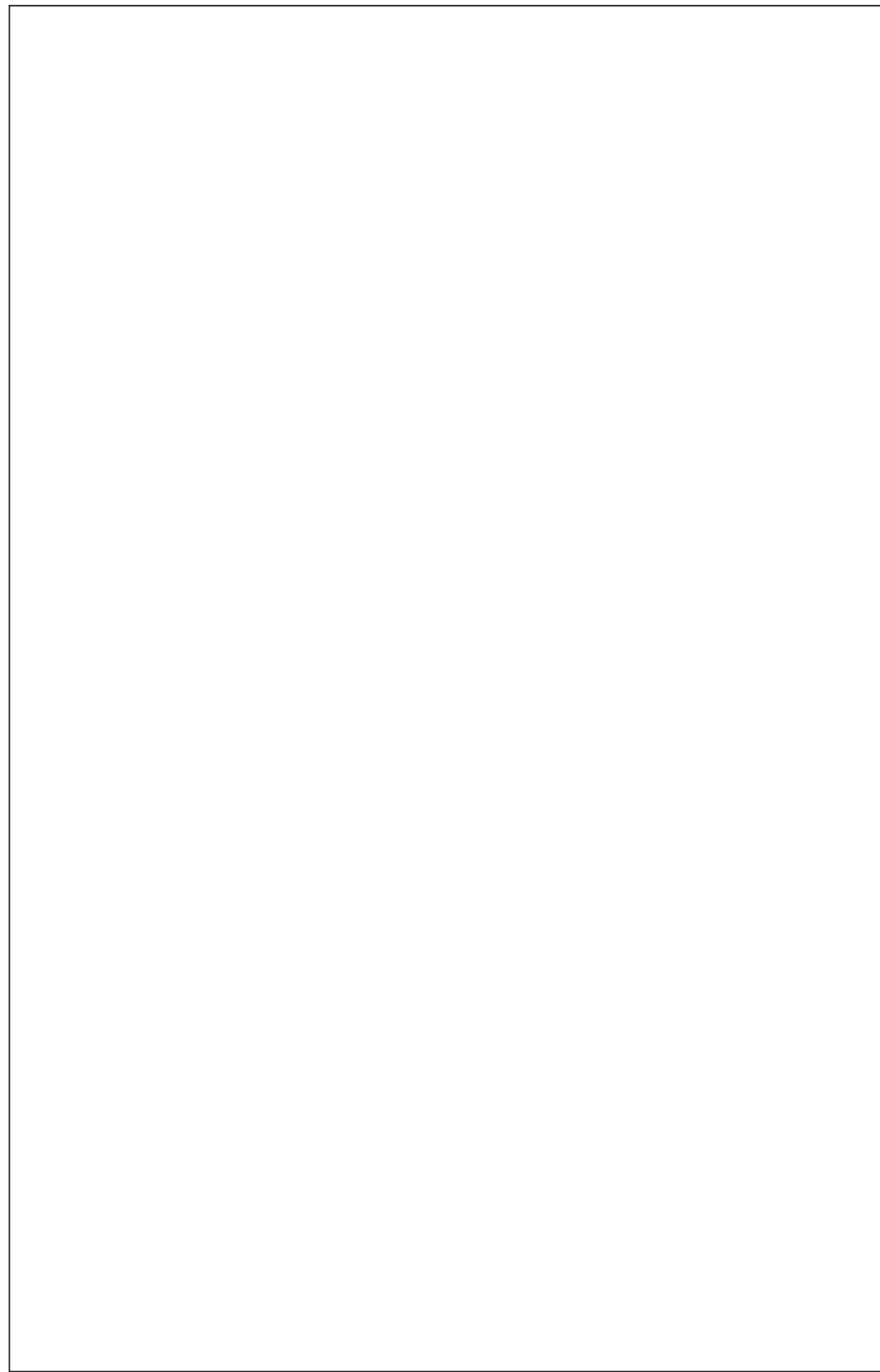
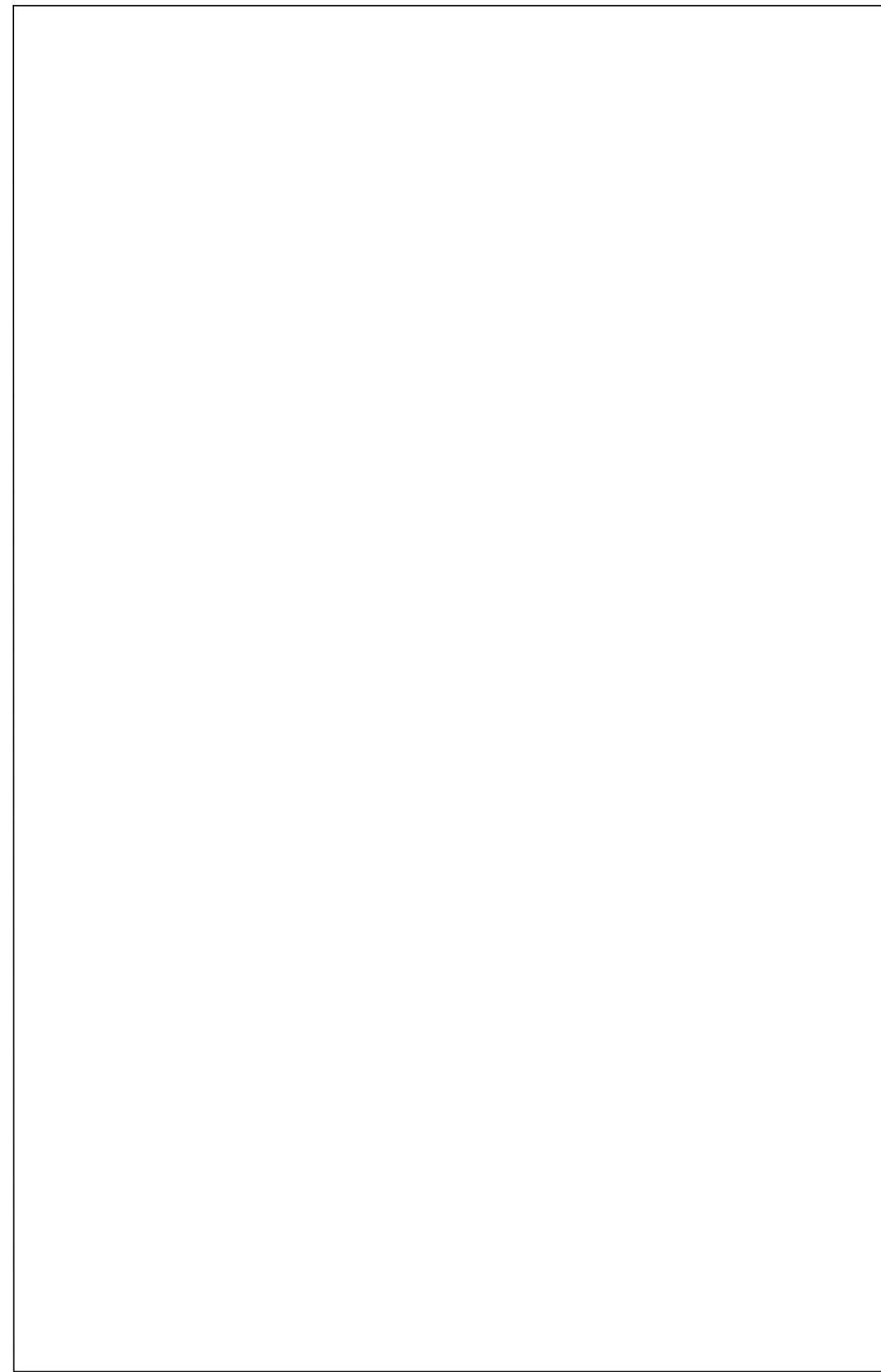
THE TEAM: THE BATT BOYS
 UNIVERSITY OF CALGARY
 SCHULICH SCHOOL OF ENGINEERING
 CALGARY, ALBERTA

NATHAN THAM - 30046119
 JOSH VALIQUETTE - 30045123
 JUSTIN NGUYEN - 30042258
 LUKAS MORRISON - 30038720
 ADAM KUCHARSKI - 30039557

PROJECT TITLE: CAPSTONE
 AGGREGATED BATTERY
 ENERGY STORAGE
 SYSTEM (BESS) FACILITY

DRAWING TITLE:
 ELECTRICAL SYMBOL LEGEND

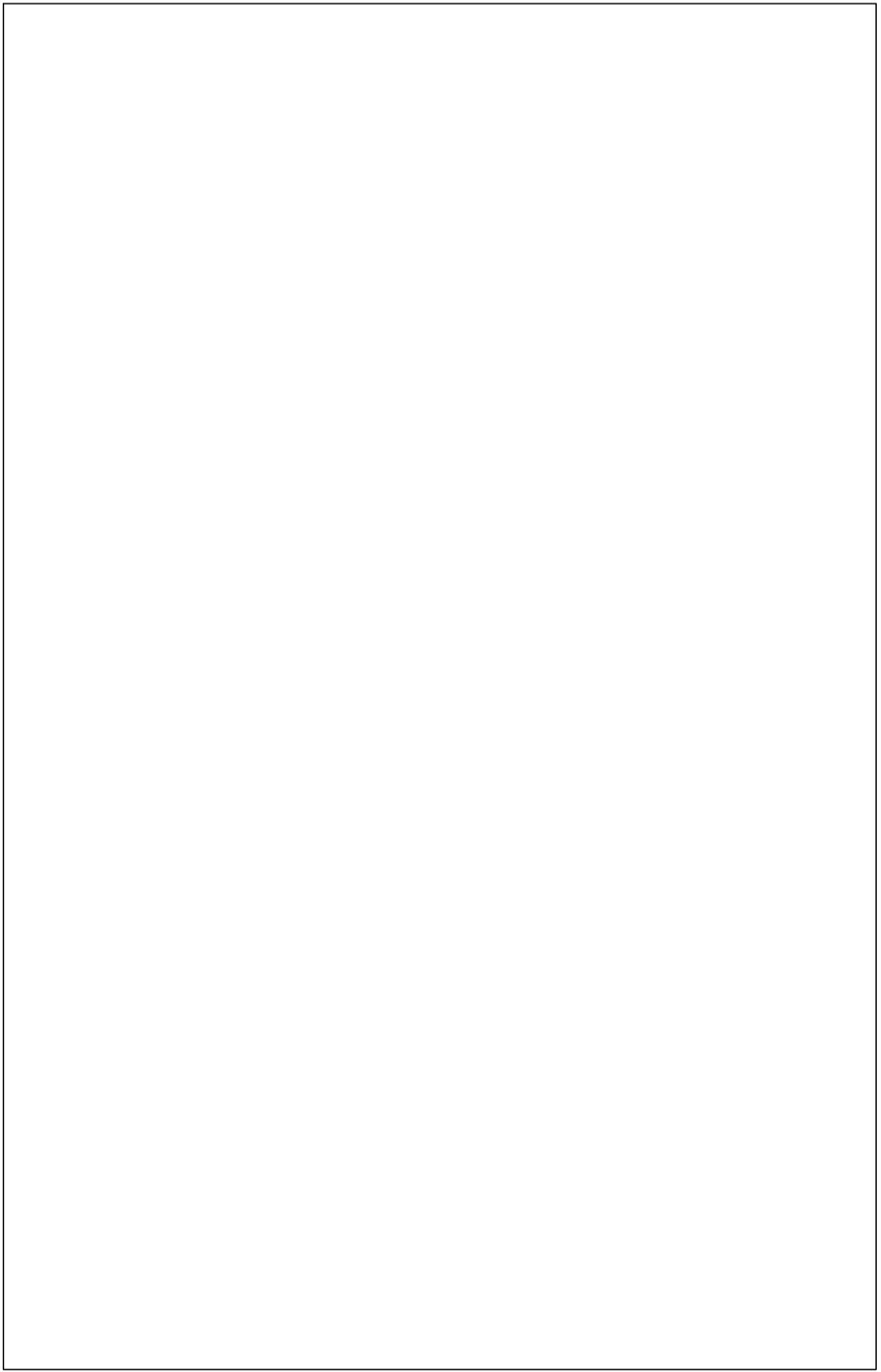
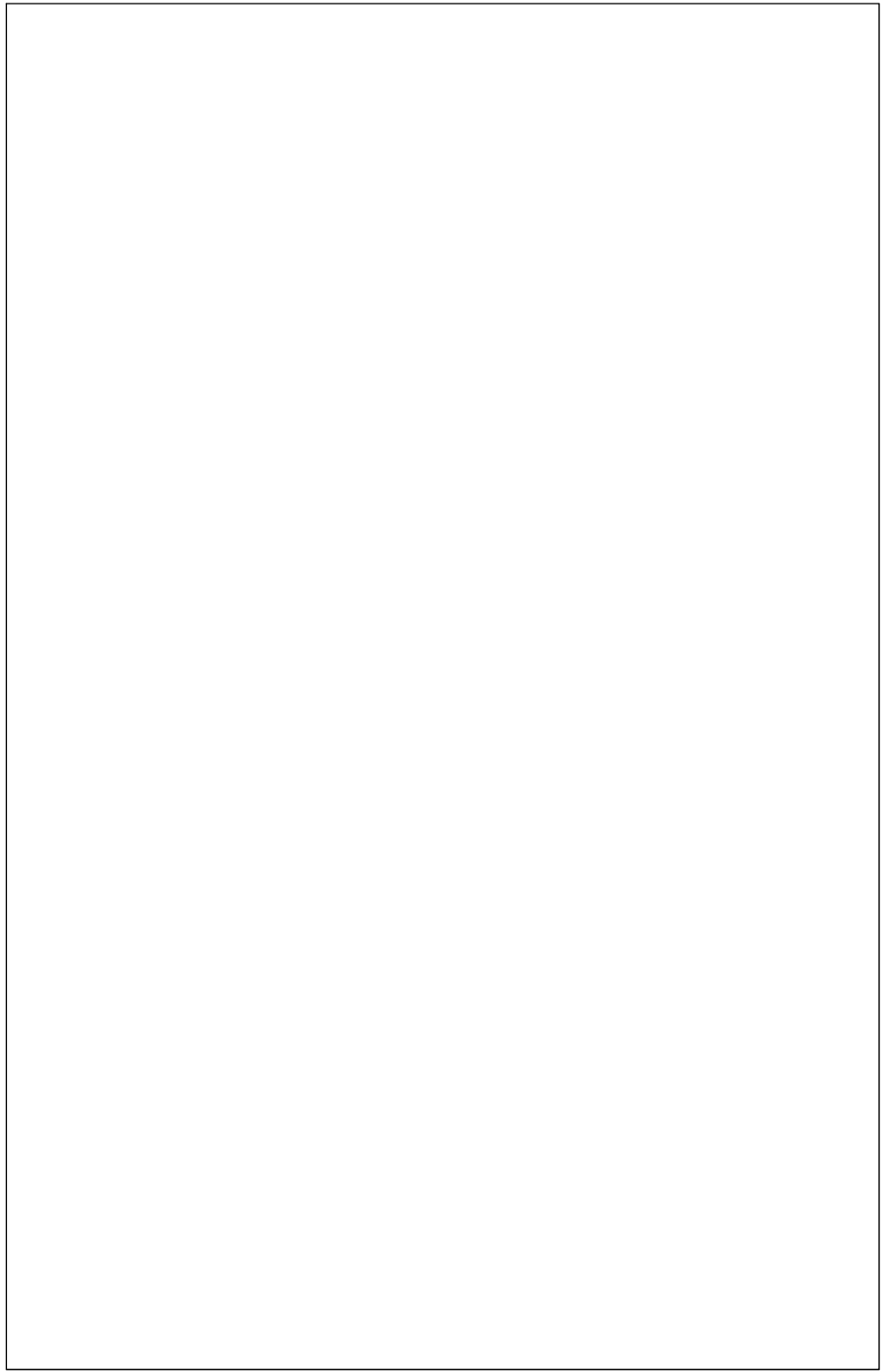
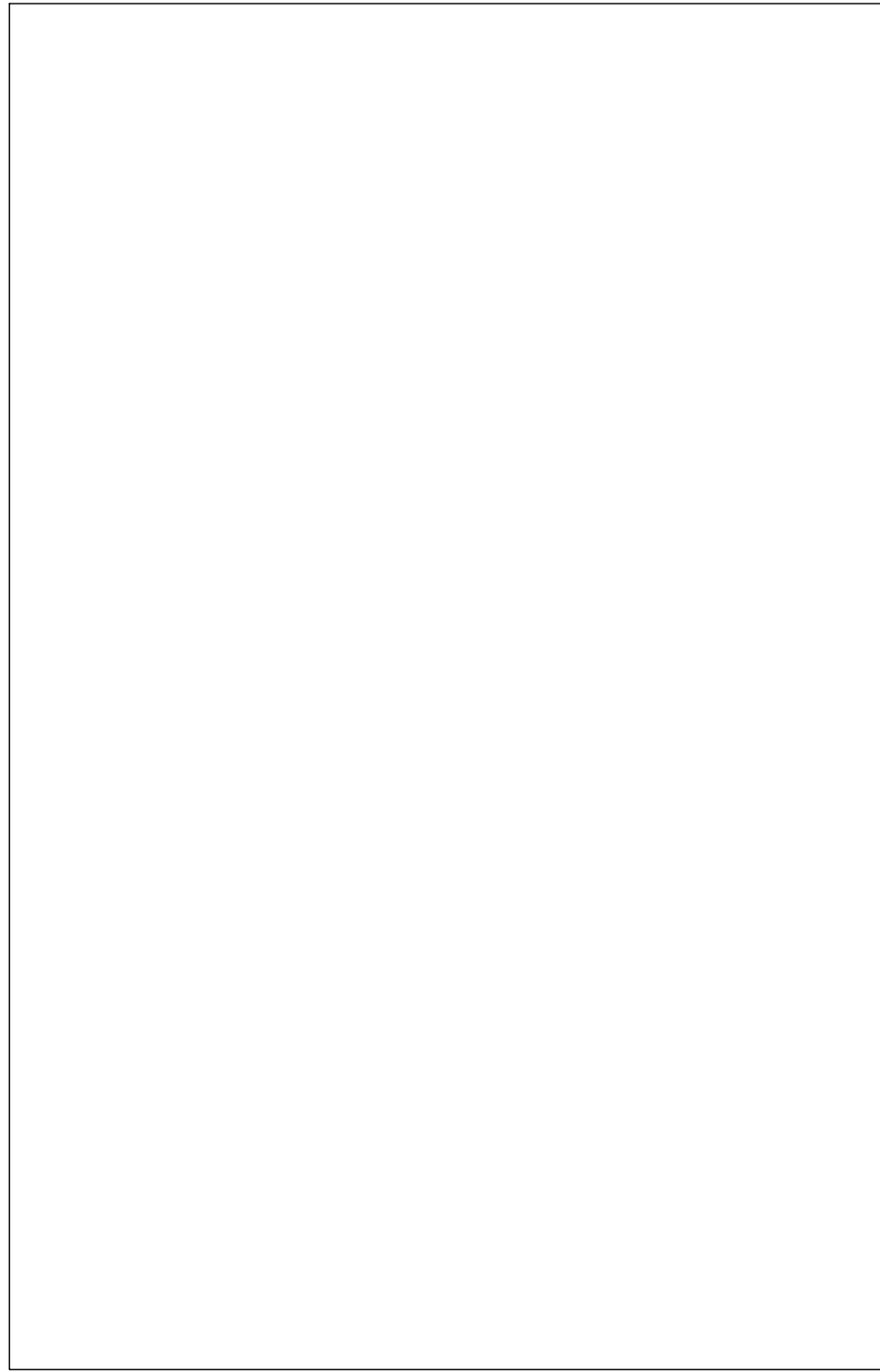
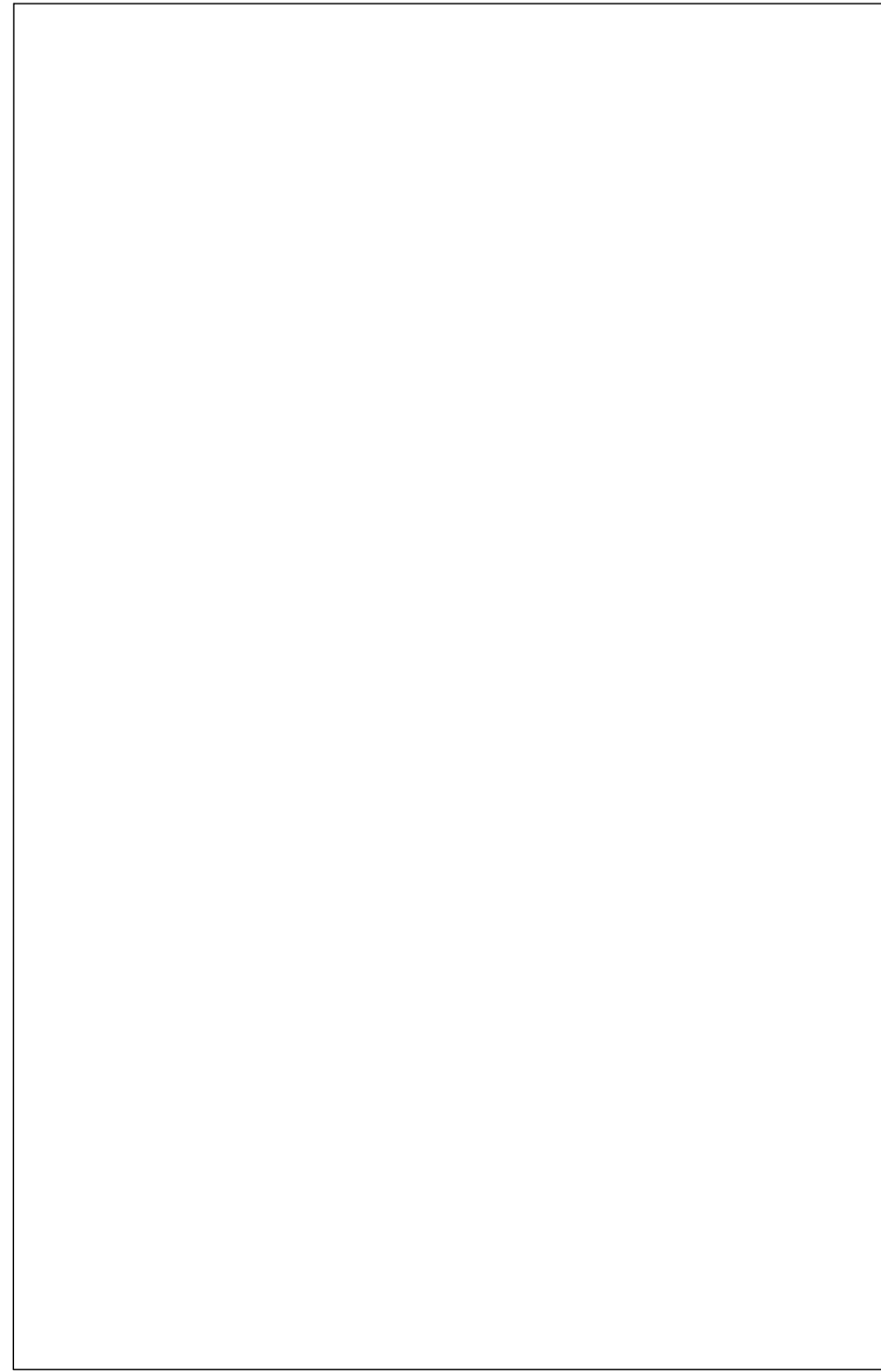
DRAWING SCALE:	DATE:	DRAWN:	CHECKED:
N.T.S.	3/26/22	NT	NT
PROJECT NO:	DRAWING NO:	REVISION:	
00001	E-100		4



DRAWING NOTES:

- 1. COMPONENTS WITHIN TESLA MEGAPACK ARE PROPRIETARY. SEE TESLA MEGAPACK DRAWINGS FOR COMPONENT DETAILS.

DETAIL 1 : TESLA MEGAPACK DETAIL



Notes:

- 1. THE INTELLECTUAL PROPERTY OF THIS DRAWING SET IS VESTED IN THE BATT BOYS AND IT MAY NOT BE REPRODUCED IN WHOLE OR PART OR USED FOR THE MANUFACTURE OF ANY ARTICLE WITHOUT THE EXPRESS PERMISSION OF THE COPYRIGHT HOLDERS.
- 2. WORK TO FIGURED DIMENSIONS ONLY.
- 3. THIS DRAWING IS TO BE READ IN CONJUNCTION WITH ALL RELEVANT ARCHITECTS, SERVICE ENGINEER'S AND THE BATT BOYS DRAWINGS AND SPECIFICATIONS.
- 4. CONTRACTOR SHALL CHECK ALL DIMENSIONS ON THE WORK AND REPORT ANY DISCREPANCY TO CONSULTANT BEFORE PROCEEDING.
- 5. THIS DRAWING IS NOT TO BE USED FOR CONSTRUCTION UNTIL AUTHORIZED IN WRITING BY CONSULTANT.

4	ISSUED FOR FINAL TECH. REVIEW	NT	03/30/2022
3	ISSUED FOR WINTER TECH. REVIEW	NT	02/08/2022
2	ISSUED FOR REVIEW	NT	01/28/2022
1	ISSUED FOR REVIEW	NT	01/21/2022

REV:	DESCRIPTION:	BY:	DATE:
STATUS:	NOT ISSUED FOR CONS.		

THE SPONSOR: ENFINITE
 509 Ave SW #1320
 CALGARY, ALBERTA
 T2P 3H9

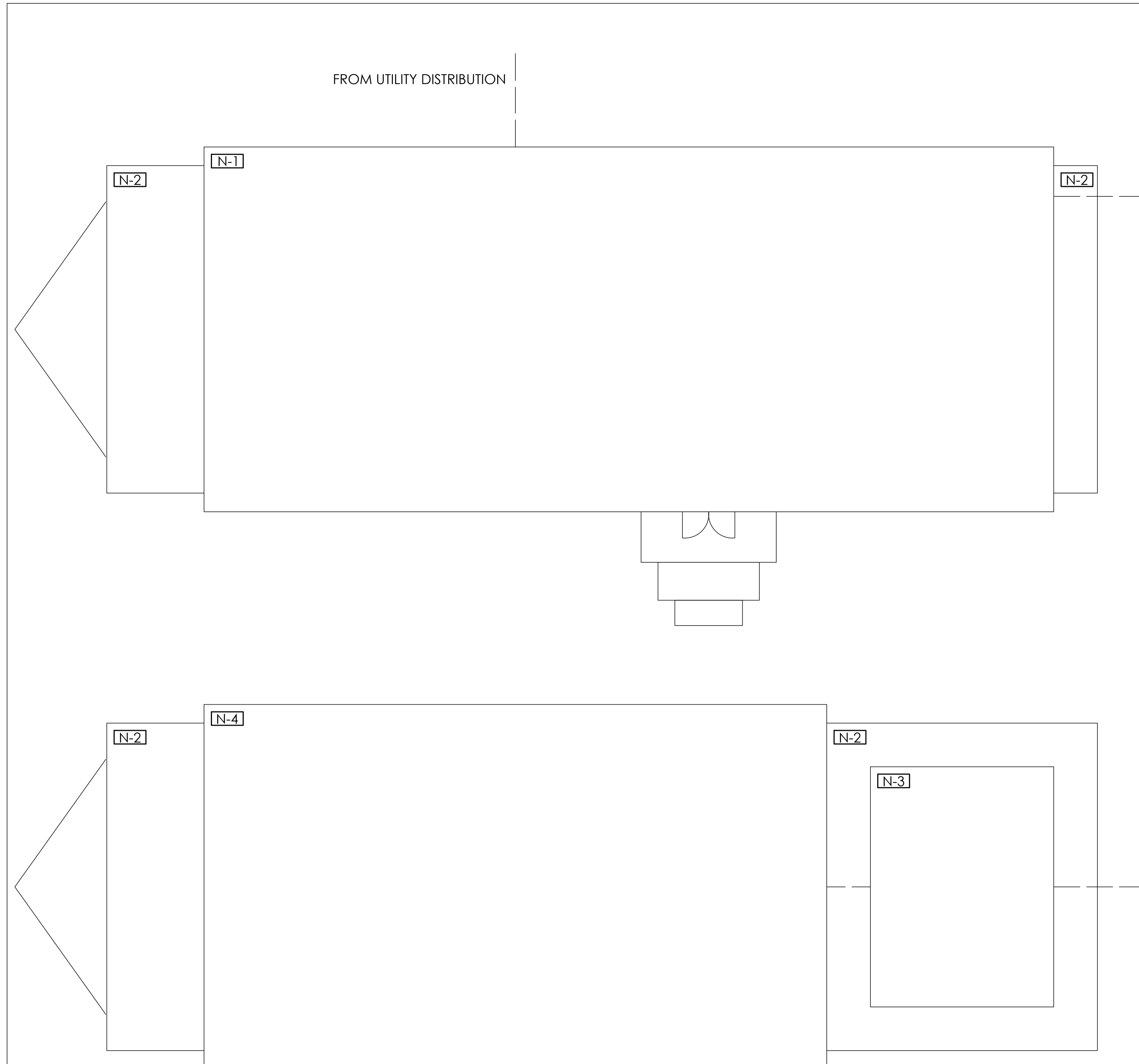
THE TEAM: THE BATT BOYS
 UNIVERSITY OF CALGARY
 SCHULICH SCHOOL OF ENGINEERING
 CALGARY, ALBERTA

NATHAN THAM - 30046119
 JOSH VALIQUETTE - 30045123
 JUSTIN NGUYEN - 30042258
 LUKAS MORRISON - 30038720
 ADAM KUCHARSKI - 30039557

PROJECT TITLE: CAPSTONE
 AGGREGATED BATTERY
 ENERGY STORAGE
 SYSTEM (BESS) FACILITY

DRAWING TITLE:
ELECTRICAL DETAILS

DRAWING SCALE:	DATE:	DRAWN:	CHECKED:
N.T.S.	3/26/22	NT	NT
PROJECT NO:	DRAWING NO:	REVISION:	
00001	E-200	4	



GENERAL NOTES:

1. COORDINATE FINAL HEIGHTS WITH GENERAL CONTRACTOR AND DISTRIBUTION REPRESENTATIVE.
2. THESE DRAWINGS WILL BE READ IN CONJUNCTION WITH THE ARCHITECT/INTERIOR DESIGNER'S DRAWINGS FOR DIMENSIONS, HEIGHTS, CONSTRUCTION DETAILING, FINISHED AND COLORS.
3. THE CIRCUITING IN PART IS DIAGRAMMATIC, INTENDED TO SHOW GENERAL CIRCUIT ARRANGEMENT AND PANEL DESIGNATION. PANELS MUST BE BALANCED AS PER SPECIFICATIONS UPON COMPLETION.
4. ELECTRICAL CONTRACTOR TO VERIFY EXACT POWER REQUIREMENT AND RECEPTACLE TYPE FOR SPECIAL EQUIPMENT WITH MANUFACTURER PRIOR TO INSTALLATION.
5. ELECTRICAL CONTRACTOR TO PROVIDE HARDWIRE DIRECT CONNECTIONS FOR SPECIAL EQUIPMENT.
6. ELECTRICAL CONTRACTOR TO OBTAIN APPROVAL FROM DESIGN CONSULTANT FOR OUTLET LOCATIONS PRIOR TO INSTALLATION. ALLOW FOR RELOCATION OF UP TO 3M IN ANY DIRECTION FROM LOCATION INDICATED ON DRAWINGS.
7. ELECTRICAL CONTRACTOR TO SUPPLY AND INSTALL SUITABLE LABELS ON ALL EQUIPMENT. LABELS TO INCLUDE BOTH PANEL AND CIRCUIT DESIGNATION. REVIEW LABEL SIZE AND TYPE WITH CONSULTANT PRIOR TO INSTALLATION.
8. ELECTRICAL CONTRACTOR SHALL TRACE ALL EXISTING OUTLETS, NOTED AS EXISTING AND IDENTIFY ON AS BUILT DRAWING AS PER ISSUED SPECIFICATION.
9. ELECTRICAL CONTRACTOR IS TO PROVIDE AND INSTALL POWER TO MECHANICAL UNITS. ALLOW FOR HARDWIRE CONNECTIONS AND DISCONNECTS AT ALL UNITS, PIPE AND WIRE TO FOLLOW MECHANICAL ROUTING, ALLOW FOR ALL ASSOCIATED COSTS. COORDINATE WITH ALL APPLICABLE SHOP DRAWINGS AND THE MECHANICAL CONTRACTOR ON SITE PRIOR TO ROUGH-IN AND INSTALLATION.
10. THIS DRAWING IS FOR INFORMATIVE PURPOSES ONLY. DRAWINGS IS NOT TO SCALE. EXACT LOCATIONS ARE ROUGH ESTIMATES AND ARE SUBJECT TO CHANGE. COMPONENTS ARE BASED ON PRELIMINARY BILL OF MATERIALS AND ARE SUBJECT TO CHANGE.

DRAWING NOTES:

- N-1** EHOUSE
- N-2** FLATBED TRAILER BED
- N-3** MEGAPACK 1
- N-4** MEGAPACK 1 TRANSFORMER

Notes:

1. THE INTELLECTUAL PROPERTY OF THIS DRAWING SET IS VESTED IN THE BATT BOYS AND IT MAY NOT BE REPRODUCED IN WHOLE OR PART OR USED FOR THE MANUFACTURE OF ANY ARTICLE WITHOUT THE EXPRESS PERMISSION OF THE COPYRIGHT HOLDERS.
2. WORK TO FIGURED DIMENSIONS ONLY.
3. THIS DRAWING IS TO BE READ IN CONJUNCTION WITH ALL RELEVANT ARCHITECTS, SERVICE ENGINEER'S AND THE BATT BOYS DRAWINGS AND SPECIFICATIONS.
4. CONTRACTOR SHALL CHECK ALL DIMENSIONS ON THE WORK AND REPORT ANY DISCREPANCY TO CONSULTANT BEFORE PROCEEDING.
5. THIS DRAWING IS NOT TO BE USED FOR CONSTRUCTION UNTIL AUTHORIZED IN WRITING BY CONSULTANT.

4	ISSUED FOR FINAL TECH. REVIEW	NT	03/30/2022
3	ISSUED FOR WINTER TECH. REVIEW	NT	02/08/2022
2	ISSUED FOR REVIEW	NT	01/28/2022
1	ISSUED FOR REVIEW	NT	01/21/2022

REV:	DESCRIPTION:	BY:	DATE:
STATUS:	NOT ISSUED FOR CONS.		

THE SPONSOR: ENFINITE
 50 9 Ave SW #1320
 CALGARY, ALBERTA
 T2P 3H9

THE TEAM: THE BATT BOYS
 UNIVERSITY OF CALGARY
 SCHULICH SCHOOL OF ENGINEERING
 CALGARY, ALBERTA

NATHAN THAM - 30046119
 JOSH VALIQUETTE - 30045123
 JUSTIN NGUYEN - 30042258
 LUKAS MORRISON - 30038720
 ADAM KUCHARSKI - 30039557

PROJECT TITLE: CAPSTONE
 AGGREGATED BATTERY
 ENERGY STORAGE
 SYSTEM (BESS) FACILITY

DRAWING TITLE:
 FACILITY LAYOUT

DRAWING SCALE:	DATE:	DRAWN:	CHECKED:
N.T.S.	3/26/22	NT	NT
PROJECT NO:	DRAWING NO:	REVISION:	
00001	E-300		4

DRAWING NOTES:

- N-8 UPS DISTRIBUTION PANEL
- N-9 COMMUNICATIONS RACK
- N-10 UNINTERRUPTED POWER SUPPLY (UPS)
- N-11 PANEL A
- N-12 WALL MOUNTED HVAC UNIT



GENERAL NOTES:

1. COORDINATE FINAL HEIGHTS WITH GENERAL CONTRACTOR AND DISTRIBUTION REPRESENTATIVE.
2. THESE DRAWINGS WILL BE READ IN CONJUNCTION WITH THE ARCHITECT/INTERIOR DESIGNER'S DRAWINGS FOR DIMENSIONS, HEIGHTS, CONSTRUCTION DETAILING, FINISHED AND COLORS.
3. THE CIRCUITING IN PART IS DIAGRAMMATIC, INTENDED TO SHOW GENERAL CIRCUIT ARRANGEMENT AND PANEL DESIGNATION. PANELS MUST BE BALANCED AS PER SPECIFICATIONS UPON COMPLETION.
4. ELECTRICAL CONTRACTOR TO VERIFY EXACT POWER REQUIREMENT AND RECEPTACLE TYPE FOR SPECIAL EQUIPMENT WITH MANUFACTURER PRIOR TO INSTALLATION.
5. ELECTRICAL CONTRACTOR TO PROVIDE HARDWIRE DIRECT CONNECTIONS FOR SPECIAL EQUIPMENT.
6. ELECTRICAL CONTRACTOR TO OBTAIN APPROVAL FROM DESIGN CONSULTANT FOR OUTLET LOCATIONS PRIOR TO INSTALLATION. ALLOW FOR RELOCATION OF UP TO 3M IN ANY DIRECTION FROM LOCATION INDICATED ON DRAWINGS.
7. ELECTRICAL CONTRACTOR TO SUPPLY AND INSTALL SUITABLE LABELS ON ALL EQUIPMENT. LABELS TO INCLUDE BOTH PANEL AND CIRCUIT DESIGNATION. REVIEW LABEL SIZE AND TYPE WITH CONSULTANT PRIOR TO INSTALLATION.
8. ELECTRICAL CONTRACTOR SHALL TRACE ALL EXISTING OUTLETS, NOTED AS EXISTING AND IDENTIFY ON AS BUILT DRAWING AS PER ISSUED SPECIFICATION.
9. ELECTRICAL CONTRACTOR IS TO PROVIDE AND INSTALL POWER TO MECHANICAL UNITS. ALLOW FOR HARDWIRE CONNECTIONS AND DISCONNECTS AT ALL UNITS, PIPE AND WIRE TO FOLLOW MECHANICAL ROUTING, ALLOW FOR ALL ASSOCIATED COSTS. COORDINATE WITH ALL APPLICABLE SHOP DRAWINGS AND THE MECHANICAL CONTRACTOR ON SITE PRIOR TO ROUGH-IN AND INSTALLATION.
10. THIS DRAWING IS FOR INFORMATIVE PURPOSES ONLY. DRAWINGS IS NOT TO SCALE. EXACT LOCATIONS ARE ROUGH ESTIMATES AND ARE SUBJECT TO CHANGE. COMPONENTS ARE BASED ON PRELIMINARY BILL OF MATERIALS AND ARE SUBJECT TO CHANGE.

Notes:

1. THE INTELLECTUAL PROPERTY OF THIS DRAWING SET IS VESTED IN THE BATT BOYS AND IT MAY NOT BE REPRODUCED IN WHOLE OR PART OR USED FOR THE MANUFACTURE OF ANY ARTICLE WITHOUT THE EXPRESS PERMISSION OF THE COPYRIGHT HOLDERS.
2. WORK TO FIGURED DIMENSIONS ONLY.
3. THIS DRAWING IS TO BE READ IN CONJUNCTION WITH ALL RELEVANT ARCHITECTS, SERVICE ENGINEER'S AND THE BATT BOYS DRAWINGS AND SPECIFICATIONS.
4. CONTRACTOR SHALL CHECK ALL DIMENSIONS ON THE WORK AND REPORT ANY DISCREPANCY TO CONSULTANT BEFORE PROCEEDING.
5. THIS DRAWING IS NOT TO BE USED FOR CONSTRUCTION UNTIL AUTHORIZED IN WRITING BY CONSULTANT.

4	ISSUED FOR FINAL TECH. REVIEW	NT	03/30/2022
3	ISSUED FOR WINTER TECH. REVIEW	NT	02/08/2022
2	ISSUED FOR REVIEW	NT	01/28/2022
1	ISSUED FOR REVIEW	NT	01/21/2022

REV:	DESCRIPTION:	BY:	DATE:
STATUS:	NOT ISSUED FOR CONS.		

THE SPONSOR: ENFINITE
 50 9 Ave SW #1320
 CALGARY, ALBERTA
 T2P 3H9

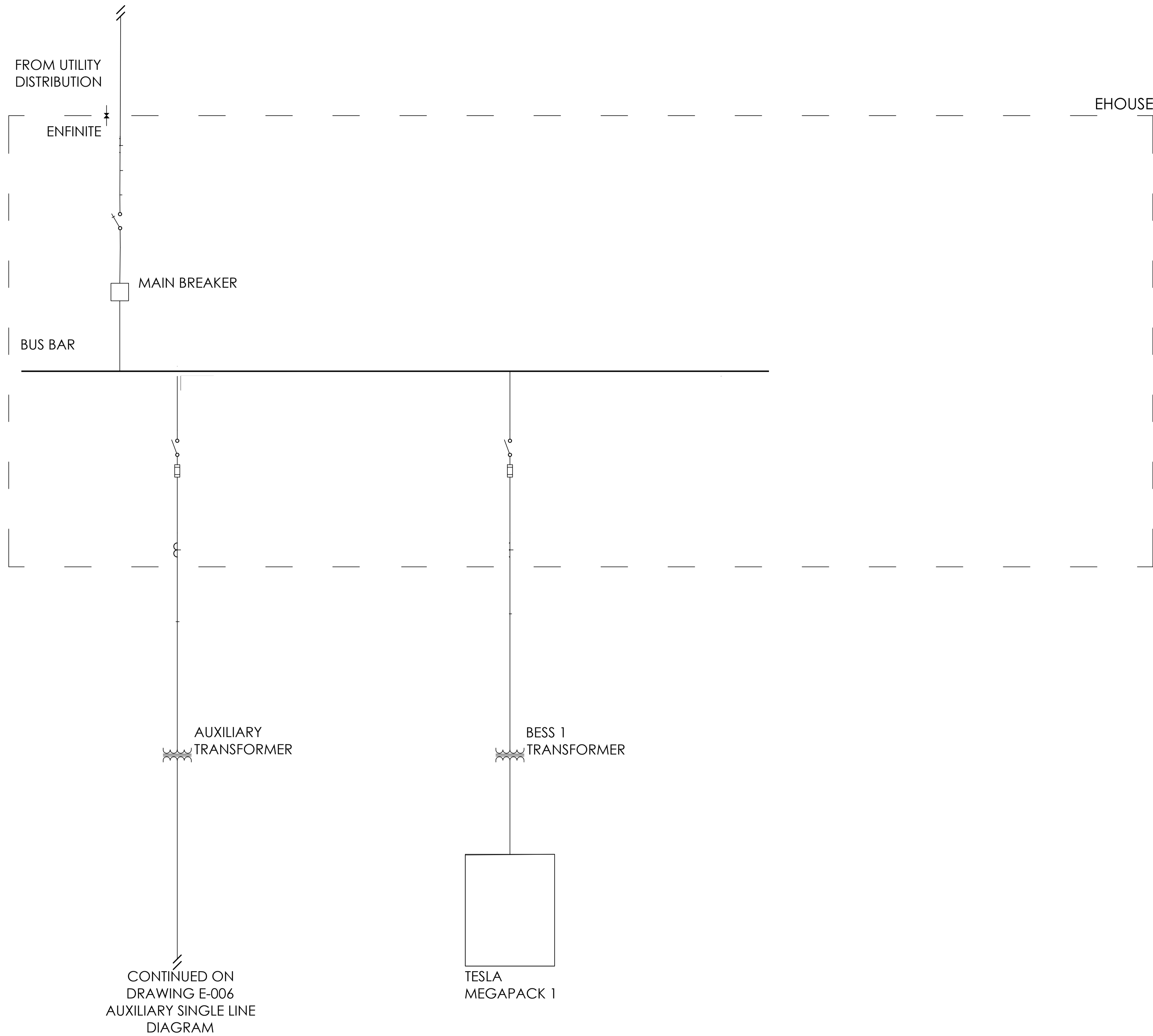
THE TEAM: THE BATT BOYS
 UNIVERSITY OF CALGARY
 SCHULICH SCHOOL OF ENGINEERING
 CALGARY, ALBERTA

NATHAN THAM - 30046119
 JOSH VALIQUETTE - 30045123
 JUSTIN NGUYEN - 30042258
 LUKAS MORRISON - 30038720
 ADAM KUCHARSKI - 30039557

PROJECT TITLE: CAPSTONE
 AGGREGATED BATTERY
 ENERGY STORAGE
 SYSTEM (BESS) FACILITY

DRAWING TITLE:
 EHOUSE LAYOUT

DRAWING SCALE:	DATE:	DRAWN:	CHECKED:
N.T.S.	3/26/22	NT	NT
PROJECT NO:	DRAWING NO:	REVISION:	
00001	E-400		4



GENERAL NOTES:

1. COORDINATE FINAL HEIGHTS WITH GENERAL CONTRACTOR AND DISTRIBUTION REPRESENTATIVE.
2. THESE DRAWINGS WILL BE READ IN CONJUNCTION WITH THE ARCHITECT/INTERIOR DESIGNER'S DRAWINGS FOR DIMENSIONS, HEIGHTS, CONSTRUCTION DETAILING, FINISHED AND COLORS.
3. THE CIRCUITING IN PART IS DIAGRAMMATIC, INTENDED TO SHOW GENERAL CIRCUIT ARRANGEMENT AND PANEL DESIGNATION. PANELS MUST BE BALANCED AS PER SPECIFICATIONS UPON COMPLETION.
4. ELECTRICAL CONTRACTOR TO VERIFY EXACT POWER REQUIREMENT AND RECEPTACLE TYPE FOR SPECIAL EQUIPMENT WITH MANUFACTURER PRIOR TO INSTALLATION.
5. ELECTRICAL CONTRACTOR TO PROVIDE HARDWIRE DIRECT CONNECTIONS FOR SPECIAL EQUIPMENT.
6. ELECTRICAL CONTRACTOR TO OBTAIN APPROVAL FROM DESIGN CONSULTANT FOR OUTLET LOCATIONS PRIOR TO INSTALLATION. ALLOW FOR RELOCATION OF UP TO 3M IN ANY DIRECTION FROM LOCATION INDICATED ON DRAWINGS.
7. ELECTRICAL CONTRACTOR TO SUPPLY AND INSTALL SUITABLE LABELS ON ALL EQUIPMENT. LABELS TO INCLUDE BOTH PANEL AND CIRCUIT DESIGNATION. REVIEW LABEL SIZE AND TYPE WITH CONSULTANT PRIOR TO INSTALLATION.
8. ELECTRICAL CONTRACTOR SHALL TRACE ALL EXISTING OUTLETS, NOTED AS EXISTING AND IDENTIFY ON AS BUILT DRAWING AS PER ISSUED SPECIFICATION.
9. ELECTRICAL CONTRACTOR IS TO PROVIDE AND INSTALL POWER TO MECHANICAL UNITS. ALLOW FOR HARDWIRE CONNECTIONS AND DISCONNECTS AT ALL UNITS, PIPE AND WIRE TO FOLLOW MECHANICAL ROUTING, ALLOW FOR ALL ASSOCIATED COSTS. COORDINATE WITH ALL APPLICABLE SHOP DRAWINGS AND THE MECHANICAL CONTRACTOR ON SITE PRIOR TO ROUGH-IN AND INSTALLATION.

Notes:

1. THE INTELLECTUAL PROPERTY OF THIS DRAWING SET IS VESTED IN THE BATT BOYS AND IT MAY NOT BE REPRODUCED IN WHOLE OR PART OR USED FOR THE MANUFACTURE OF ANY ARTICLE WITHOUT THE EXPRESS PERMISSION OF THE COPYRIGHT HOLDERS.
2. WORK TO FIGURED DIMENSIONS ONLY.
3. THIS DRAWING IS TO BE READ IN CONJUNCTION WITH ALL RELEVANT ARCHITECTS, SERVICE ENGINEER'S AND THE BATT BOYS DRAWINGS AND SPECIFICATIONS.
4. CONTRACTOR SHALL CHECK ALL DIMENSIONS ON THE WORK AND REPORT ANY DISCREPANCY TO CONSULTANT BEFORE PROCEEDING.
5. THIS DRAWING IS NOT TO BE USED FOR CONSTRUCTION UNTIL AUTHORIZED IN WRITING BY CONSULTANT.

4	ISSUED FOR FINAL TECH. REVIEW	NT	03/30/2022
3	ISSUED FOR WINTER TECH. REVIEW	NT	02/08/2022
2	ISSUED FOR REVIEW	NT	01/28/2022
1	ISSUED FOR REVIEW	NT	01/21/2022

REV:	DESCRIPTION:	BY:	DATE:
STATUS:	NOT ISSUED FOR CONS.		

THE SPONSOR: ENFINITE
 509 Ave SW #1320
 CALGARY, ALBERTA
 T2P 3H9

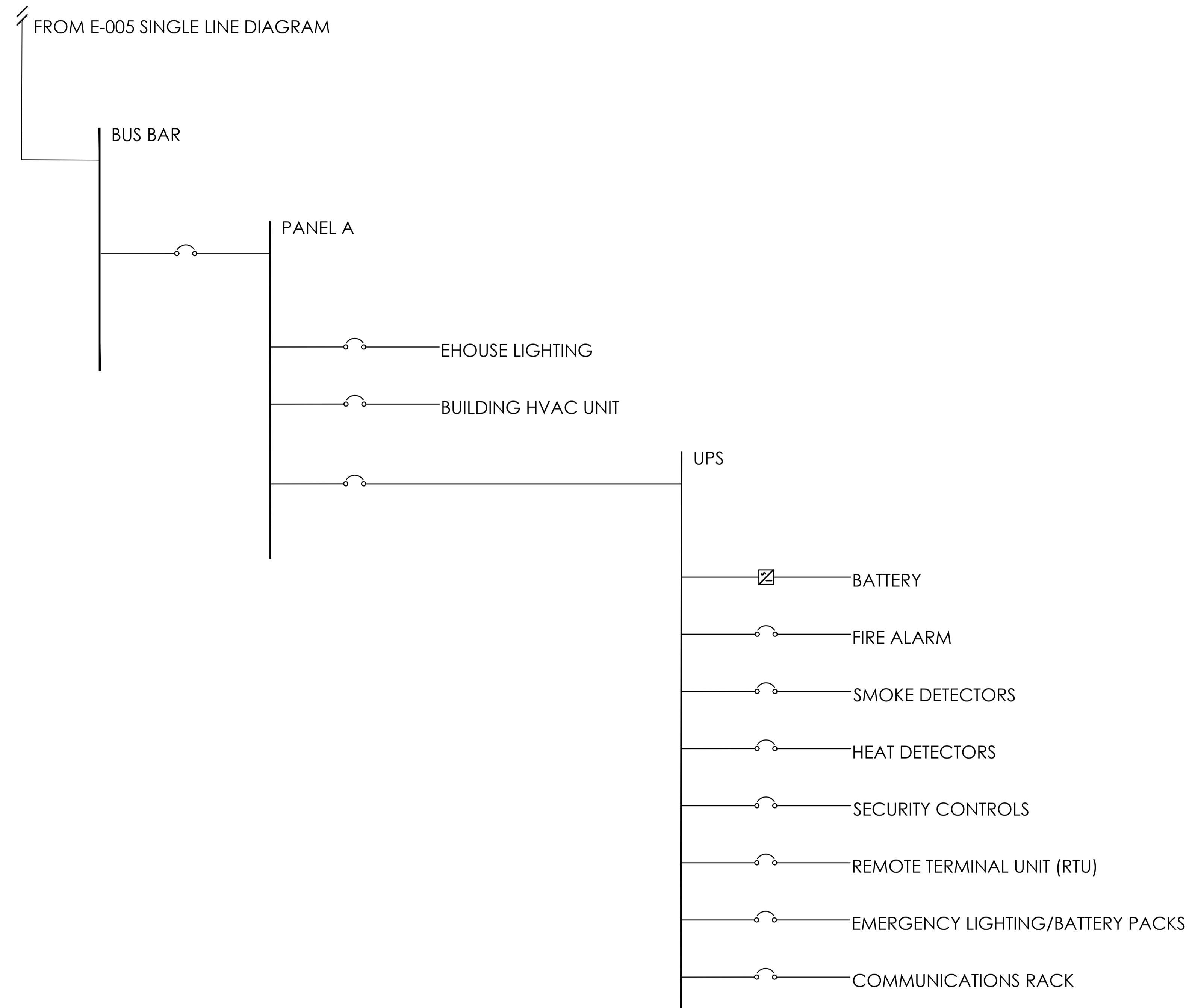
THE TEAM: THE BATT BOYS
 UNIVERSITY OF CALGARY
 SCHULICH SCHOOL OF ENGINEERING
 CALGARY, ALBERTA

NATHAN THAM - 30046119
 JOSH VALIQUETTE - 30045123
 JUSTIN NGUYEN - 30042258
 LUKAS MORRISON - 30038720
 ADAM KUCHARSKI - 30039557

PROJECT TITLE: CAPSTONE
 AGGREGATED BATTERY
 ENERGY STORAGE
 SYSTEM (BESS) FACILITY

DRAWING TITLE:
 SINGLE LINE DIAGRAM

DRAWING SCALE:	DATE:	DRAWN:	CHECKED:
N.T.S.	3/26/22	NT	NT
PROJECT NO:	DRAWING NO:	REVISION:	
00001	E-500	4	



GENERAL NOTES:

- COORDINATE FINAL HEIGHTS WITH GENERAL CONTRACTOR AND DISTRIBUTION REPRESENTATIVE.
- THESE DRAWINGS WILL BE READ IN CONJUNCTION WITH THE ARCHITECT/INTERIOR DESIGNER'S DRAWINGS FOR DIMENSIONS, HEIGHTS, CONSTRUCTION DETAILING, FINISHED AND COLORS.
- THE CIRCUITING IN PART IS DIAGRAMMATIC, INTENDED TO SHOW GENERAL CIRCUIT ARRANGEMENT AND PANEL DESIGNATION. PANELS MUST BE BALANCED AS PER SPECIFICATIONS UPON COMPLETION.
- ELECTRICAL CONTRACTOR TO VERIFY EXACT POWER REQUIREMENT AND RECEPTACLE TYPE FOR SPECIAL EQUIPMENT WITH MANUFACTURER PRIOR TO INSTALLATION.
- ELECTRICAL CONTRACTOR TO PROVIDE HARDWIRE DIRECT CONNECTIONS FOR SPECIAL EQUIPMENT.
- ELECTRICAL CONTRACTOR TO OBTAIN APPROVAL FROM DESIGN CONSULTANT FOR OUTLET LOCATIONS PRIOR TO INSTALLATION. ALLOW FOR RELOCATION OF UP TO 3M IN ANY DIRECTION FROM LOCATION INDICATED ON DRAWINGS.
- ELECTRICAL CONTRACTOR TO SUPPLY AND INSTALL SUITABLE LABELS ON ALL EQUIPMENT. LABELS TO INCLUDE BOTH PANEL AND CIRCUIT DESIGNATION. REVIEW LABEL SIZE AND TYPE WITH CONSULTANT PRIOR TO INSTALLATION.
- ELECTRICAL CONTRACTOR SHALL TRACE ALL EXISTING OUTLETS, NOTED AS EXISTING AND IDENTIFY ON AS BUILT DRAWING AS PER ISSUED SPECIFICATION.
- ELECTRICAL CONTRACTOR IS TO PROVIDE AND INSTALL POWER TO MECHANICAL UNITS. ALLOW FOR HARDWIRE CONNECTIONS AND DISCONNECTS AT ALL UNITS, PIPE AND WIRE TO FOLLOW MECHANICAL ROUTING, ALLOW FOR ALL ASSOCIATED COSTS. COORDINATE WITH ALL APPLICABLE SHOP DRAWINGS AND THE MECHANICAL CONTRACTOR ON SITE PRIOR TO ROUGH-IN AND INSTALLATION.

Notes:

- THE INTELLECTUAL PROPERTY OF THIS DRAWING SET IS VESTED IN THE BATT BOYS AND IT MAY NOT BE REPRODUCED IN WHOLE OR PART OR USED FOR THE MANUFACTURE OF ANY ARTICLE WITHOUT THE EXPRESS PERMISSION OF THE COPYRIGHT HOLDERS.
- WORK TO FIGURED DIMENSIONS ONLY.
- THIS DRAWING IS TO BE READ IN CONJUNCTION WITH ALL RELEVANT ARCHITECTS, SERVICE ENGINEER'S AND THE BATT BOYS DRAWINGS AND SPECIFICATIONS.
- CONTRACTOR SHALL CHECK ALL DIMENSIONS ON THE WORK AND REPORT ANY DISCREPANCY TO CONSULTANT BEFORE PROCEEDING.
- THIS DRAWING IS NOT TO BE USED FOR CONSTRUCTION UNTIL AUTHORIZED IN WRITING BY CONSULTANT.

4	ISSUED FOR FINAL TECH. REVIEW	NT	03/30/2022
3	ISSUED FOR WINTER TECH. REVIEW	NT	02/08/2022
2	ISSUED FOR REVIEW	NT	01/28/2022
1	ISSUED FOR REVIEW	NT	01/21/2022

REV:	DESCRIPTION:	BY:	DATE:
STATUS:	NOT ISSUED FOR CONS.		

THE SPONSOR: ENFINITE
 50 9 Ave SW #1320
 CALGARY, ALBERTA
 T2P 3H9

THE TEAM: THE BATT BOYS
 UNIVERSITY OF CALGARY
 SCHULICH SCHOOL OF ENGINEERING
 CALGARY, ALBERTA

NATHAN THAM - 30046119
 JOSH VALIQUETTE - 30045123
 JUSTIN NGUYEN - 30042258
 LUKAS MORRISON - 30038720
 ADAM KUCHARSKI - 30039557

PROJECT TITLE: CAPSTONE
 AGGREGATED BATTERY
 ENERGY STORAGE
 SYSTEM (BESS) FACILITY

DRAWING TITLE:
 AUXILIARY SINGLE LINE
 DIAGRAM

DRAWING SCALE:	DATE:	DRAWN:	CHECKED:
N.T.S.	3/26/22	NT	NT
PROJECT NO:	DRAWING NO:	REVISION:	
00001	E-600		4